



44 Portland Street, Worcester, MA 01608  
info@artsworcester.org // 508-755-5142  
WWW.ARTSWORCESTER.ORG

ArtsWorcester uses  
biodegradable envelopes



NON-PROFIT ORG  
U.S. POSTAGE  
**PAID**  
PERMIT NO. 441  
WORCESTER, MA

RETURN SERVICE  
REQUESTED

## UPCOMING EXHIBITIONS:

*The Little One:* A MEMBERS' EXHIBITION

JOAN RYAN: *Myth Busters*

TRACY SPADAFORA: *Left Behind*

*Dodge and Burn:* A JURIED MEMBERS' EXHIBITION

LISA BARTHELSON: *meld merge mix*

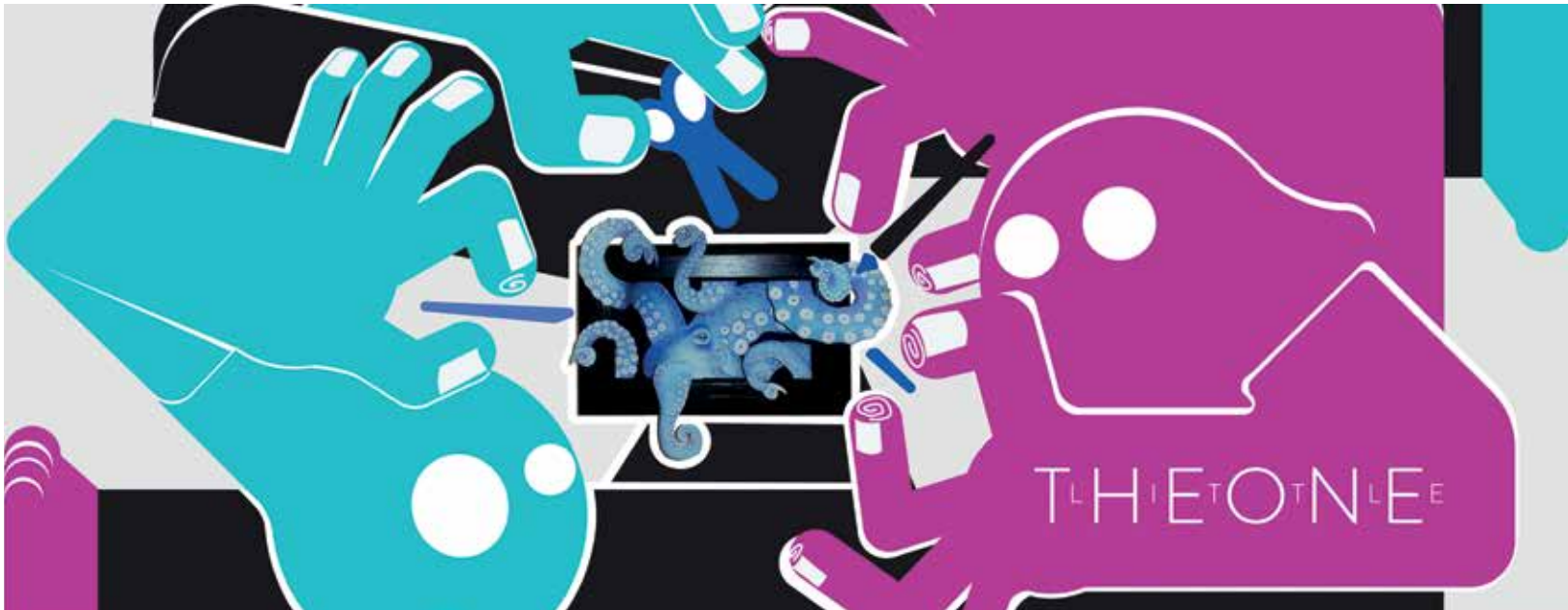
DEAR FRIEND, With exhibitions back in full swing, ArtsWorcester has returned to a pre-pandemic pace. As the pace and noise levels increase, though, we haven't forgotten what closing the galleries taught us. A beautiful space for talented artists matters enormously, but we heard again and again from you about the community built within it, a community that extends beyond it.

One artist described joining ArtsWorcester as finding themselves “in the company of a large and supportive community I had never realized existed.” A supporter told us, “I know if I encounter an ArtsWorcester member somewhere else, I'm with good people.” A staff member put it slightly differently: “We trust each other.”

And we do. Artists trust us with their work, to handle, exhibit, and sell it respectfully. We trust artists to stay true to their practices while making deadlines and meeting challenges. The city trusted us to keep contemporary art vibrant when the doors closed and streets were silent. Year in and year out, gallery-goers, art lovers, and students trust us to provide quality experiences, and we trust our contributors to continue valuing and supporting those experiences.

From the bottom of our hearts, in this month of Thanksgiving, we thank you for your trust, and look forward to finding new ways to merit it.

Yours, JULIET FEIBEL, *Executive Director*



Graphic courtesy of Ryan Smith, Kirby Gallery Coordinator. Original artwork: Melissa Borges, *All Arms and Legs*, watercolor, jewelry box, 8.5" x 5.5", 2015. Exhibited as part of The Seventh Annual "One," 2019.



44 Portland Street, Worcester, MA 01608  
info@artsworcester.org // 508-755-5142  
[WWW.ARTSWORCESTER.ORG](http://WWW.ARTSWORCESTER.ORG)

## ***The Little One: A Members' Exhibition***

November 18–December 19, 2021

Reception: Friday, December 3, 6:00–9:00 PM

We're bringing our biggest exhibition down to scale. For the ninth iteration of ArtsWorcester's "One," all artist members have been invited to exhibit one small-scale artwork.

*When exhibitions are on view, gallery hours run  
Thursday–Sunday, 12:00 PM–5:00 PM, free and open  
to the public. Please visit our website for updates.*

*ArtsWorcester exhibitions are sustained in part by the generous  
support of the C. Jean and Myles McDonough Charitable Foundation.*

NON-PROFIT ORG

U.S. POSTAGE

**PAID**

PERMIT NO. 441

WORCESTER, MA

RETURN SERVICE  
REQUESTED



*Listen to the Crumble (detail), charcoal, 4 panels, 60" x 42", 2021, \$4,000*



44 Portland Street, Worcester, MA 01608  
info@artsworcester.org // 508-755-5142  
WWW.ARTSWORCESTER.ORG

## Joan Ryan: *Myth Busters*

November 18–December 19, 2021

Reception: Friday, December 3, 6:00–9:00 PM

Ryan's paintings and drawings juxtapose visual imagery—historical depictions, cartoons, children's stories, and political iconography—to explore modern society and concepts of identity. *Myth Busters* takes the form of a wall installation, creating a dynamic interplay between pictorial elements and expanding the open-ended and disjointed narratives suggested by her imagery. By invoking and critiquing nostalgia for an America that never was, *Myth Busters* asks us to question our manufactured desire for a fictitious past and the belief system through which we see ourselves.

*When exhibitions are on view, gallery hours run Thursday–Sunday, 12:00 PM–5:00 PM, free and open to the public. Please visit our website for updates.*

*ArtsWorcester exhibitions are sustained in part by the generous support of the C. Jean and Myles McDonough Charitable Foundation.*

NON-PROFIT ORG

U.S. POSTAGE

PAID

PERMIT NO. 441

WORCESTER, MA

RETURN SERVICE  
REQUESTED



*Dumpster 1-800*, oil and encaustic on braced wood panel, 24" x 24", 2019



*Dumpster 3002*, oil and encaustic on braced wood panel, 24" x 24", 2021



*Dumpster 45196*, oil and encaustic on braced wood panel, 24" x 24", 2020



44 Portland Street, Worcester, MA 01608  
info@artsworcester.org // 508-755-5142  
WWW.ARTSWORCESTER.ORG

*The*  
**HANOVER THEATRE**  
*for the Performing Arts*

Thank you to The Hanover Theatre for the  
Performing Arts for two decades of partnership.

## Tracy Spadafora: *Left Behind*

January 8–April 23, 2022

Reception: Sunday, January 16, 2022, 2:00–4:00 PM

*The Franklin Square Salon at The Hanover Theatre*

Dumpsters and trash bins are ubiquitous yet often go unnoticed. Through her observation of containers behind office buildings, strip malls, construction sites, and restaurants, Spadafora captures signs of corrosion and decay in her latest series. By documenting the layers of wear, she searches for a history within the marks, creating a record of human impact on our environment.

*Our exhibitions at The Hanover Theatre now have regular gallery hours, 11:00 AM–1:00 PM, open to the public and free of charge. See it in their beautiful Franklin Square Salon, and then walk over for our gallery hours, beginning at noon. Please visit our website for updates.*

NON-PROFIT ORG

U.S. POSTAGE

**PAID**

PERMIT NO. 441

WORCESTER, MA

RETURN SERVICE  
REQUESTED







44 Portland Street, Worcester, MA 01608  
info@artsworcester.org // 508-755-5142  
WWW.ARTSWORCESTER.ORG

## ***Dodge and Burn: A Juried Members' Exhibition***

January 30–February 27, 2022

Reception: Friday, December 3, 6:00–9:00 PM

Dodging and burning are the ways photographers in the darkroom either lighten or darken different areas of an image, a technique that has since been modernized in digital editing software. The resulting effect is a heightened visual contrast. For this juried exhibition, artists capture elements of contrast—visual or thematic—within a single artwork.

*When exhibitions are on view, gallery hours run Thursday–Sunday, 12:00 PM–5:00 PM, free and open to the public. Please visit our website for updates.*

*ArtsWorcester exhibitions are sustained in part by the generous support of the C. Jean and Myles McDonough Charitable Foundation.*

NON-PROFIT ORG

U.S. POSTAGE

**PAID**

PERMIT NO. 441

WORCESTER, MA

RETURN SERVICE  
REQUESTED



*meld merge mix* (installation detail) courtesy of Lisa Barthelson



44 Portland Street, Worcester, MA 01608  
info@artsworcester.org // 508-755-5142  
WWW.ARTSWORCESTER.ORG

## Lisa Barthelson: *meld merge mix*

January 20–February 27, 2022

Reception: Friday, January 21, 2022, 6:00–9:00 PM

*(Snow date: January 28)*

A sharp look at sustainability, *meld merge mix* is an immersive, site-specific installation that scrutinizes consumerism and its persistent byproducts. Through the creation of a new environment using one family's cast-off debris, Lisa Barthelson reimagines the impact of the “disposable” objects familiar to our everyday lives and actions.

*When exhibitions are on view, gallery hours run Thursday–Sunday, 12:00 PM–5:00 PM, free and open to the public. Please visit our website for updates.*

*ArtsWorcester exhibitions are sustained in part by the generous support of the C. Jean and Myles McDonough Charitable Foundation.*

NON-PROFIT ORG

U.S. POSTAGE

PAID

PERMIT NO. 441

WORCESTER, MA

RETURN SERVICE  
REQUESTED